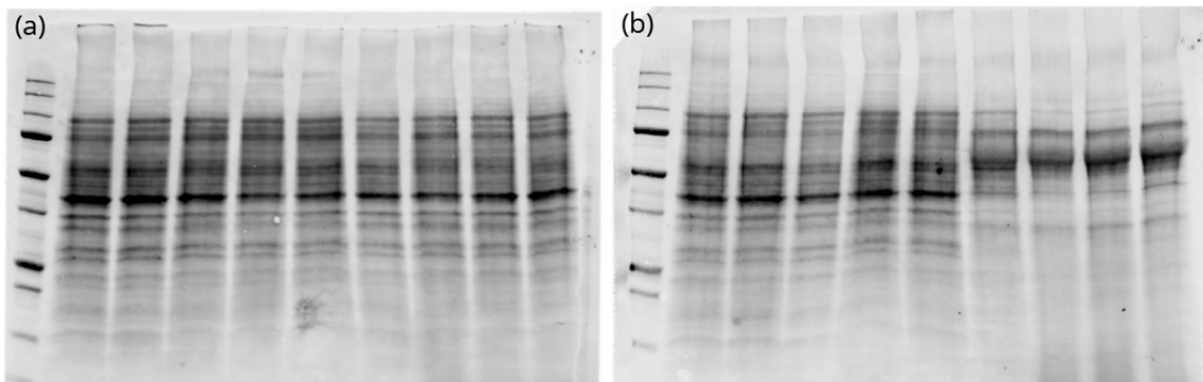


Combined treatment of gemcitabine with indole-3-carbinol or metformin on drug efficacy in pancreatic cancer cell lines: The role of human equilibrative nucleoside transporters

Stancy Joseph, Beverly Word and Beverly Lyn-Cook

<http://dx.doi.org/10.14312/2052-4994.2018-2>



Supplemental Figure 1 Total protein was used to ensure the protein loading. **A.** Western blots of hENT1 expression in SU.86.86 cells (female) (L1: Control, L2: 400 μ M MET, L3: 500 μ M GEM, L4: 250 μ M I3C, L5: 500 μ M GEM/400 μ M MET, and L6: 500 μ M GEM/250 μ M I3C). **B.** Western blots of hENT4 expression in SU.86.86 cells (L1: Control, L2: 400 μ M MET, L3: 500 μ M GEM, L4: 250 μ M I3C, L5: 500 μ M GEM/400 μ M MET, and L6: 500 μ M GEM/250 μ M I3C).